



*Beat the competition to your dream job*

# ▶ Turton Trail

Next steps in Training, Employment and Education

J. Bach ▶ Turton Careers 8b ▶ 3/28/2019

In the rush to achieve our dream job, we often overlook the opportunities on our doorstep. This edition looks at the opportunities in the locality- places where you could study and still stay home avoiding accommodation fees OR alternatively, move out of home and still stay in close contact with friends in the area, with a shorter commute for those home cooked meals!



To contact us  
[careers@turton.uk.com](mailto:careers@turton.uk.com).

## How are universities rated?...

Although there are 'official' systems for ranking a university there is nothing that beats paying a visit and seeing how it feels to be there- **Are the people there friendly? Is it a safe environment? Is there good support? Does your course cover interesting content? Does the course provide the qualification needed for your ideal job? What are the facilities like? Are there plenty of opportunities for other activities? What's the local town/area like? Do I need to travel far to get home? Is there a good transport system to get you from your accommodation to the uni/ home? ...etc.**

The official ranking systems tend to rely on surveys of student satisfaction plus the volume of published articles in journals, research funding, prestige of professors etc. One group of universities is known as the Russell Group- these are a self-appointed club of 24 universities who have good research reputations and will have a wide influence on the region, the nation and also internationally.

The 24 universities are below but don't assume that these are the best ones for you! As you can see there are two from this region- University of Manchester and the University of Liverpool.

- [University of Birmingham >](#)
- [University of Bristol >](#)
- [University of Cambridge >](#)
- [Cardiff University >](#)
- [Durham University >](#)
- [University of Edinburgh >](#)
- [University of Exeter >](#)
- [University of Glasgow >](#)
- [Imperial College London >](#)
- [King's College London >](#)
- [University of Leeds >](#)
- [University of Liverpool >](#)
- [London School of Economics and Political Science >](#)
- [University of Manchester >](#)
- [Newcastle University >](#)

- [University of Nottingham >](#)
- [University of Oxford >](#)
- [Queen Mary University of London >](#)
- [Queen's University Belfast >](#)
- [University of Sheffield >](#)
- [University of Southampton >](#)
- [University College London >](#)
- [University of Warwick >](#)
- [University of York >](#)

## Why stay in Greater Manchester?...

There are 50,000 full time and another 50,000 part time students in Manchester which is the largest concentration of students in any European city.

**University of Manchester** is ranked as the 57<sup>th</sup> best university in the world in the 2019 rankings.

*"The University of Manchester is a Russell Group University. With almost 40,000 students, it boasts the largest student community in the UK.*

*With all its higher education institutions combined, the city of Manchester has the largest student population in Europe, which makes for a lively and welcoming atmosphere for its student body, that come from all over the world.*

*Teaching at the university is divided into four faculties, each housing individual schools. These are the faculties of Life Sciences, Humanities, Medical and Human Sciences, and Engineering and Physical Sciences.*

*The university campus, situated on Oxford Road, is the largest estate in UK higher education, spanning 270 hectares with 245 buildings, 24 of which are listed. It is within walking distance from the city centre and close to Curry Mile, a road famous for its curry houses and Middle Eastern supermarkets.*

*Travelling up Curry Mile, you find yourself in Fallowfield, the student village that is home to many of the university's halls of residence as*

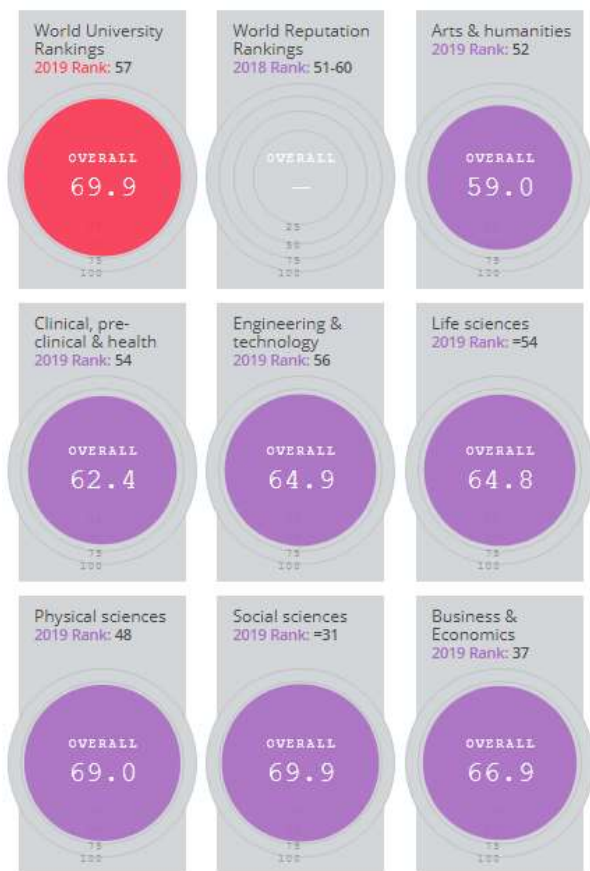
well as a vast array of pubs, bars and food outlets.

The university's library holds more than four million printed books and manuscripts, over 41,000 electronic journals and 500,000 e-books. It is also one of just five National Research Libraries. The John Ryland's Library, located in town, is a grade-I listed neo-Gothic building that houses 250,00 printed volumes and more than a million in its archives.

Other notable buildings owned by the university are the Whitworth art gallery, which has benefited from a recent £15 million renovation, the Manchester Museum, and the Jodrell Bank Observatory in Cheshire.

Manchester claims to having the largest alumni network of any campus-based university in the UK, comprising more than 300,000 people from over 190 countries. Among them are the actor Benedict Cumberbatch and the physicist Brian Cox.

In addition, the university also counts 25 Nobel Prize winners among its current and former staff and students.” [\[source\]](#)



**University of Salford** is ranked much more modestly in the [Times rankings](#) but still has a lot to offer.

“The University of Salford is located less than two miles from the city centre of Manchester in North West England.

The university can be traced back to two institutions that emerged during the industrial revolution of the 19th century: the Pendleton Mechanics Institute and the Salford Working Men’s College - both of which were founded in the 1850s to cater for the demand for industrial skills.

These two institutions became the Royal Technical Institute, Salford, just before the turn of the last century, which in turn became the Royal Technical College, Salford, in the 1920s.

After splitting again in 1958, two separate institutions developed, known as University College Salford and the University of Salford (this name was used for the first time in 1967). In 1996, the two merged again under the University of Salford name.

In addition to the main Peel Park campus, the university has a big presence in MediaCityUK, a development on the banks of the Manchester Ship Canal which also houses offices for - among others - the BBC and ITV. This gives students the chance to work in close proximity to media professionals.

In 2004, the university began a £150 million investment programme. This included the building of the £22 million Mary Seacole Building, which now houses the College of Health and Social Care, and the Law School’s £10 million Lady Hale Building.

The University of Salford’s main library is named in honour of its first ever vice-chancellor, Clifford Whitworth. Among its well-known alumni are comedians Peter Kay and Jason Manford, and the actor Sir Ben Kingsley.”

**University of Lancaster** is a 40minute trip up the M6 and is accessible with a short train ride from Bolton.

*“Lancaster University is a collegiate university in the UK city of Lancaster and a member of the N8 Research Partnership: an association of the eight most research intensive universities in the North of England.*

*The university dates back to 1947 when a public meeting in Lancaster supported the proposal for a university college to be founded in the city, although it was 1964 before its first students were admitted. Its original site was in St Leonard’s Gate in the middle of the city. Today, the campus occupies a picturesque, 360-acre parkland site three miles from the city centre.*

*Lancaster is one of just a few universities within the UK to have a collegiate system. It is home to nine colleges overall, eight for undergraduate students and one for postgraduates.*

*The campus has the feel of a small town with banks, shops, cafes, restaurants, bars, a pre-school centre and health services.*

*Students can also enjoy the campus’s own theatre and art gallery, home to an international art collection that includes Japanese and Chinese art, antiquities, and works by 20th century British and European artists, including Miró and Ernst.*

*The university is located close to mountains and the sea. The Lake District National Park and the Forest of Bowland, areas of outstanding natural beauty, are both within close proximity.*

*Lancaster has a strong reputation globally. Its international partnerships with higher education institutions include Sunway University College in Kuala Lumpur, Malaysia, the GD Goenka World Institute in India, COMSATS in Pakistan, and the Brazil- based Federal University of Lavras.*

*Lancaster is consistently voted one of the best-value universities for students and its student halls often win awards too.” [\[source\]](#)*

### **University of Liverpool:**

*“The University of Liverpool is a public university and a member of the Russell Group of research-led universities.*

*Established as University College Liverpool in 1881, it opened its doors to its first set of students in 1882, in what was a disused lunatic asylum.*

*Its iconic Victoria Building, designed by the English architect Alfred Waterhouse in 1892, is a tourist attraction in its own right. This Grade II listed building, build in the Gothic style, inspired the term ‘redbrick university’, now used to refer to a set of British universities established in leading industrial English cities during the Victorian age.*

*The university’s motto translates into English as ‘These days of peace foster learning’.*

*It became an independent university and adopted the name the University of Liverpool, in 1903.*

*Today, the university is home to around 30,000 students, including 7,000 international students from 127 countries, as well as 195,000 alumni and 6,000 staff.*

*Among its alumni are the broadcast journalist Jon Snow, and former Poet Laureate Carol Ann Duffy, while nine Nobel Laureates have passed through its doors.*

*It also claims a presence on every continent, including a Chinese joint venture university in the World Heritage City of Suzhou (Liverpool was the first UK higher education institution to establish an independent university in China), to research stations located in the Arctic.*

*As well as being the birthplace of the Beatles, the city of Liverpool also boasts the most number of museums and galleries in the UK outside of London, and was designated the European Capital of Culture in 2008.*

*According to Rough Guides, the travel guides series, Liverpool is the fourth friendliest city in the world.” [\[source\]](#)*

### **University of Central Lancashire (UCLan):**

*“The University of Central Lancashire (UCLan) was founded in 1828 as the Institution for the Diffusion of Knowledge.*

*Based in Preston, Lancashire, UCLan is one of the UK’s largest universities offering 400 undergraduate and over 200 postgraduate courses across 20 academic schools.*

*UCLan’s main campus is a ten minute walk from Preston city centre, with other campuses located in Lancashire and Cumbria, and an overseas one in Cyprus which opened in 2012 – the first British university in the country to do so.*

*High among UCLan’s priorities are maximising employability for students, furnishing them with relevant skills and developing course content to meet the needs of business.*

*The university boasts strong links with employers that include British Aerospace, Rolls Royce and Cisco Systems, and it offers business incubation facilities and training for students after graduation. In the last five years alone, it has helped more than 1,000 graduates start their own businesses - the second highest figure in the UK.*

*In addition to its focus on practical skills, the university also scores highly for its research, with all 16 of its subject areas judged to be ‘world leading’ in the 2014 Research Excellence Framework.*

*The university has recently embarked on a £200 million redevelopment of its facilities, including the construction of a £30 million Engineering Innovation Centre. Other recent additions to UCLan’s student offering include the introduction of courses in fashion and forensics and, in 2015, it opened the UK’s newest medical school.*

*Home to a student-staff community of around 38,000, with 2,000 international students among them, UCLan has a thriving, vibrant atmosphere. Beyond the campus, Preston is a small and compact city, easy to navigate and with excellent transport links to the rest of the UK. On its doorstep is the picturesque countryside of the Ribble Valley, the Trough of Bowland and the Southern Lakes.”*

### **Manchester Metropolitan University:**

*“Initially developed as a centre of Technology, Art and Design, the roots of Manchester Metropolitan University (MMU) date back to 1824; it was founded as a University in 1992, with the modern institution comprising eight specialist faculties.*

*MMU receives the third highest number of student applications in the UK and is home to more than 36,000 students, making it one of the largest student populations in Europe.*

*Manchester itself is also a renowned hub for arts, culture and creativity, and is regularly ranked in the top spot as the best city to live in the UK by the Economist Intelligence Unit’s Global Liveability Survey.*

*MMU itself lays claim to a total of 8,000 students and staff who are involved in ‘cultural production’, making it one of the largest creative communities in Britain.*

*The university’s achievements are not just limited to creative disciplines though. MMU boasts the UK’s second largest Business School. In 2014 it was recognised as a top ‘new’ university for its health research in the Research Excellence Framework results, while the institution has long been at the forefront of developments in Early Years and Childhood Studies.*

*‘Promoting diversity’ is listed among the university core values, as is an emphasis on vocational education and employability.*

*MMU also prides itself on strong partnerships with businesses and organisations at a regional, national and international level, and which include the BBC and IBM. Many of its degree courses include a year-long work placement with these organisations – something the university believes aids its high employment rate for graduates.*

*Based on two campuses, MMU is located in Manchester city centre with another site in the town of Crewe, in Cheshire. The university has made significant capital investment in its infrastructure of late, giving rise to a new student’s union building, new laboratories, a £10million Exercise and Sport Science Centre, and a £6million contemporary arts centre on its Cheshire campus.*

*Among the university's 250,000 alumni, are the actors and comedians Steve Coogan, Julie Walters and John Bishop, while poet laureate Carol Ann Duffy is the Creative Director of its Writing School."* [\[source\]](#)

### **Edge Hill University:**

*"Founded in Edge Hill, Liverpool in 1885 as the first non-denominational teacher training college for women, the institution quickly grew and moved to the current Ormskirk location in 1933. It was granted the power to award taught degrees in 2005 and was renamed as Edge Hill University in 2006.*

*It has historic links to the suffragette movement and hosts a suffragette symposium every year, with the university's colours of gold, green and heliotrope (purple) reflecting this historic link. It is still known for its high quality teacher training courses. It has 11 faculties: biology, business (at the Edge Hill Business School), computer science, English, history and creative writing, geography, law and criminology, media, performing arts, psychology, social sciences and sport and physical activity.*

*The Ormskirk campus is in the administrative centre of West Lancashire and is a traditional British market town, midway between Liverpool and the country town of Preston, which the Woodlands campus is based in Chorley, central Lancashire. Its academic community is made up of almost 12,000 undergraduate and postgraduate students, with another 4,000 on part time programmes.*

*Notable alumni include journalist Stuart Maconie, actor Jonathan Pryce, radio DJ Danny Howard and the UK's first ever female barrister, Helena Normanton QC.*

*An area boasting many nearby sites of natural beauty, students can explore the Lake District and Peak District easily. International travel is made easy with the nearby Manchester and Liverpool airports and the seaside town of Blackpool is easily accessible from Edge Hill University too."* [\[source\]](#)

Others to consider:

**[University of Bolton](#):** Ranked Silver in the new ranking system and also awarded the

number one slot for student satisfaction in Greater Manchester 2019 PLUS university of the year 2018 for the Greater Manchester area.

*"As well as offering research opportunities, Masters and PhD degree, it is known for its vocationally focused and industry-relevant taught degree programmes. Its courses include Business and Media programmes. The Times states: 'The university is not research-driven, but engineering, architecture and the built environment, social work and social policy all contained some 'world-leading' research in the 2008 assessments'."* [\[19\]](#) The Times made this statement despite the University ranking so low.

*In November 2014 it became the first University in the North West to become a Living Wage employer."* [\[20\]](#) The University is also above average in closing the [gender pay gap](#).[\[21\]](#) On 17 February 2016, it was announced that the University of Bolton would become the principal shirt sponsors of the [Manchester Giants](#) basketball team for the 2016 season. On 2 April 2016, the University of Bolton became again the sponsors of the [Bolton Wanderers](#), in an agreement which will initially last until Summer 2016."[\[22\]](#)" [\[source\]](#)

**Liverpool John Moores University (LJMU):** "Originally opened as a Mechanics Institute in 1823, is now one of the largest higher education institutions in the UK.

*Named after Sir John Moores – the entrepreneur and philanthropist who founded the Littlewoods retail empire – the university comprises three large campuses, with the central 'City' campus just a short walk from some of Liverpool's main sites, including the World Museum, the Walker Art Gallery and St George's Hall"* [\[source\]](#)

**Colleges:** Some colleges in the area award degrees validated by their associated universities and are often overlooked for higher education...

### **[Blackburn:](#)**

**Teaching Excellence Framework (TEF)**



TEF Bronze is awarded to institutions that deliver teaching, learning and outcomes for their students that meet "rigorous national quality requirements" for higher education in the UK.

### Undergraduate Courses

#### Types of Qualification:

- [Bachelor's Degree](#) (44)
- [First Degree](#) (44)
- [Foundation Degree](#) (16)
- [HNC](#) (1)
- [LLB](#) (2)
- [Other Undergraduate](#) (1)

#### Direct from Blackburn College:

*"Love your family and friends?*

*Love saving money?*

*Love to study locally?*

*If you choose to study at the University Centre at Blackburn College you will be able to study close to your home, your family and your friends, whilst keeping your hobbies and your part-time job! You will also save £££s on your rent, your living expenses and your travel costs.*

*In addition to this you will get a degree from UK Top 10 Lancaster University too!*

*We are located only a 5 minute walk from the train station and over 31 direct trains between Bolton and Blackburn every day it only takes 28 minutes, just enough time to catch up on your favourite TV programme or to spend some quiet time studying your new course subject.*

*What's not to love!*

Take a look at our [Undergraduate 2019/20 entry prospectus](#) to find your perfect course.

*[Hear from Melissa](#) who decided to study local rather than move away from home.*

*[Visit our website](#) to find out more about studying at the University Centre at Blackburn College.*

*Our next Open Event is on **Thursday 13<sup>th</sup> June from 4.30pm to 8pm**. If you cannot make this event or would like to explore the campus sooner I can arrange a VIP tour of the campus. Please email [Allison.billington@blackburn.ac.uk](mailto:Allison.billington@blackburn.ac.uk) please let me know and we can arrange this at your earliest convenience."*

University Centre at Blackburn College

Choose to study close to home with a Higher Education course at the University Centre at Blackburn College

Get a UK Top 10 Lancaster University degree on your doorstep!

University Centre at Blackburn College

Choose to study close to home with a Higher Education course at the University Centre at Blackburn College

Study locally and save £1,000s

On your fees  
On your accommodation  
On your travel  
On your living expenses

University Centre at Blackburn College

Choose to study close to home with a Higher Education course at the University Centre at Blackburn College

SAVE £££s ON YOUR RENT, YOUR LIVING EXPENSES AND YOUR TRAVEL

You could even get a £500 Bonus when you have over 90% attendance for full-time suitable students!

Other colleges:

[Burnley:](#)

[Macclesfield:](#)

[Manchester:](#)

[Wigan and Leigh:](#)

# Turton Trail

Next steps in Training, Employment and Education

## Apprenticeships:

[Digital Project Delivery Apprentice 2019 - Level 3 - North West](#)

[Balfour Beatty](#) Advanced apprenticeship

[Apprentice Electrician 2019 - Level 3 - North West](#)

[Balfour Beatty](#) Advanced apprenticeship

[IBM Software Developer-higher apprenticeship](#)

## Careers Events:

**For Yr12s UNI:4U Summer Schools-** great courses to boost your CV OR UCAS application; they include...

- Medicine @ The University of Manchester
- Creative Media @ Media City UK
- Studying HE in London
- Engineering in partnership with Network Rail, Mott MacDonald & The University of Manchester
- Chemistry @ Manchester Metropolitan University

- Molecular Microbiology @ Manchester Metropolitan University
- Studying HE at University, College & Apprenticeship - for those thinking about Higher Education but not sure about which route to take.
- Construction @ University Campus Oldham  
Contact Mrs Bali OR Mr Bach if interested.

Info on hospital placements in the UK and international:

- [Hospital placements in the UK, summer 2019](#)
- [Hospital placements in THAILAND, summer 2019](#)
- [Hospital placements in INDIA, summer 2019](#)

## Higher Education Open Days over the Easter holidays:

Saturday 6 April 2019

[Staffordshire University](#)

[Swansea University](#)

[University of Northampton](#)

[University of South Wales](#)

[Writtle University College](#)

Sunday 7 April 2019

[Sheffield Hallam University](#)

Monday 8 April 2019

[Royal Agricultural University](#)

Wednesday 10 April 2019

[Bishop Grosseteste University](#)



[University of the West of England](#)

[Canterbury Christ Church University](#)

[St Mary's University](#)

[Staffordshire University](#)

[University of East London](#)

Friday 12 April 2019

[Brunel University London](#)

Saturday 13 April 2019

[ACM the Academy of Contemporary Music](#)

[New College of the Humanities](#)

[University of Bedfordshire](#)

Sunday 14 April 2019

[ACM the Academy of Contemporary Music](#)

Tuesday 16 April 2019

[Pearson Business School](#)

Tuesday 16 April 2019

[University of Roehampton](#)

Wednesday 17 April 2019

[Arden University](#)

[University of Roehampton](#)

Thursday 18 April 2019

[University of Roehampton](#)

---