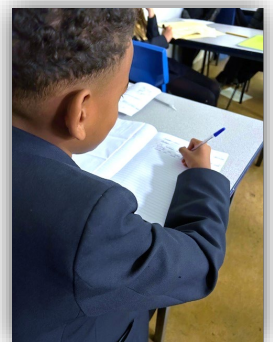


# TURTON

## Year 8 Christmas Update

A Christmas update on what year 8 pupils have been learning this term, just in case they have entirely stopped talking to you by now and only have Christmas on the mind! Additional information about the Scholars' curriculum is in brackets. All of our knowledge organisers, detailing our curriculum are here: <https://www.turton.uk.com/ks3revision/>

- **English:** The Flawed Self, Othello, Aristotle's Tragic Hero, The Fundamentals of Drama (*Dr Faustus, Death of a Salesman*)
- **Maths:** Ratio and scale, multiplicative change, using the Cartesian plane (coordinates), multiplying and dividing fractions and representing data
- **Science:** Nutrition and Digestion Acids and Alkalis and Electricity (*Treating Heart Disease*),
- **History:** Stuarts, Empire and WW1 (*The Republic*)
- **Faith&Ethics:** Sikhism and Sikh Ethics (*Utilitarianism, Deontology, Metaphysics*)
- **Geography:** Living in Britain, Coasts, Ecosystems (*geomorphic process, atmospheric circulation*)
- **Spanish:** Describing what type of house you live in and where it is. Describing your town, what you can do there and what there is to see
- **Drama:** Macbeth, soliloquy, naturalism (*Soliloquy analysis & Stanislavski's objectives*)
- **PE:** Health and well-being, diet for performers
- **Computing:** Image representation, manipulation and user interfaces (*Web Interfaces & HTML/CSS*)
- **Music:** Film Music listening & features, and composition, & Keyboard performance
- **Technology:** construction techniques/Staple foods/sewing machines and application of colour
- **Art:** Impressionism, Post-Impressionism (*Influence of Japanese prints*)



“We make a living by what we get. We make a life by what we give.”

Winston Churchill



## Update - Absence penalty notices

You may be aware that the Department for Education has recently announced national changes to fines issued for unauthorised absence. These changes came into effect on 19 August 2024.

- Penalty notices issued for offences that take place after 19 August 2024 will be charged at £160 per parent per child. This can be paid at £80 if paid within 21 days.
- Any second penalty notice issued to the same parent for the same child within a rolling 3-year period will be issued at the rate of £160 to be paid within 28 days.
- A penalty notice must be considered at 10 sessions (equivalent to 5 days) of unauthorised absence within a rolling 10-school week period.
- A maximum of 2 penalty notices may be issued to a parent for the same child within a rolling 3-year period, a 3rd offence means another course of action.

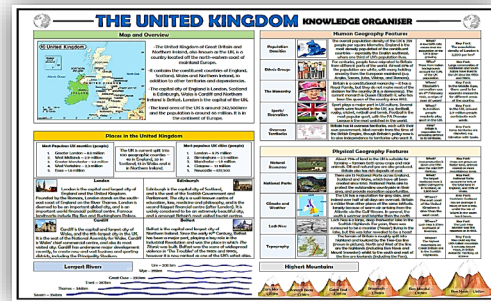
Miss Parry (Assistant Head)

## A job well done

It has been a pleasure getting to know the green-ties since I took over as their pastoral leader. They have worked hard to settle into Y8, which is no easy feat. Despite this, they have taken everything in their stride, and I've been particularly impressed with their engagement during current affairs and personal development sessions. I am proud of the effort they've put in, and I look forward to seeing this continue.

Miss Trill (Head of Year 8)

## Learning top tip #1



Pupils should use their knowledge organisers to highlight what they are (and are not) confident with. That way they can ask for extra help with the topics that they are struggling with. They will be tested on everything at the end of the school year, so leave no stone unturned.

Mrs Lane (Assistant Head)

## Curiosity Question – Spanish

Soy una tradición española, con muchos colores y ritmo al bailar. Mi vestido tiene volantes, y mis movimientos suelen impresionar. ¿Qué soy?

Miss Mansell (Head of Languages)

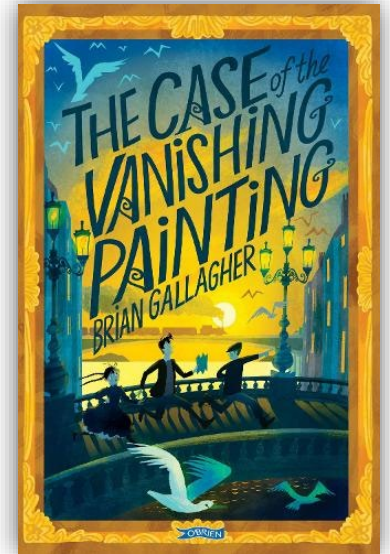
# Recommends

## *The Case of the Vanishing Painting* by Brian Gallagher

A valuable painting leaves the train station in Galway in a guarded carriage. When the train arrives in Dublin, the painting is gone.

Suspicion immediately falls on Mr Kavanagh, the train's guard. Twins Deirdre and Tim know their father isn't the thief, and they're determined to find out who is. Along with their friend Joe, they race against time to track down the painting ... but as they close in on the thief, they find themselves up against powerful enemies. Soon the children are battling not just to clear Mr Kavanagh's name – but for their very lives!

This novel is definitely one for fans of crime and mystery



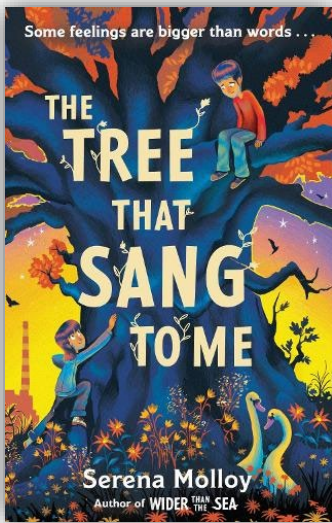
## *The Tree that Sang to Me* by Serena Molloy

Some feelings are so big, they're hard to express.

When Kai's big sister Jen leaves the family home, Kai knows it's all his fault. His secret burns, but he tells no one, just keeps pulling at tufts of his hair. But in the broad branches of a wasteland sycamore tree, Kai feels safe and free from his worries. Up there he feels he can be whoever he wants to be. And when a girl called Sky starts climbing Kai's tree, a friendship blossoms ... a friendship with the power to heal.

This **dyslexia-friendly**, beautifully illustrated verse story of friendship, family and self-discovery, will stay with you for a long time.

Pop into the library to check out these exciting titles. [Mrs Taylor \(Librarian\)](#)



# Jump in

Just to let you know about some of the marvellous things going on in January 2025 that pupils can get involved in to really make the most of their time at Turton. A full timetable of activities can be found here: <https://www.turton.uk.com/afterschool/>

### Vocal Group: 3-4pm Monday (Arts Theatre)

Once the school show is completed in February this group will work on new material and singing in harmony. The group is run by our voice teacher Mrs Needham. It caters for all age groups – just turn up once the school show is over. [Mr Parkinson \(Head of Music\)](#)



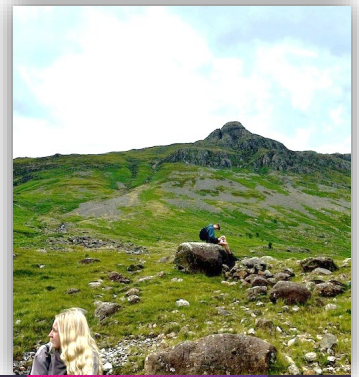
### Book Club: Year 8 Lunch, Mondays (Library)

Join our school book club for exciting discussions, new friendships, and to share in your love of reading. Check the year 8 announcements page on teams to find out this month's book. Pop into the library for more details. [Mrs Taylor \(Librarian\)](#)

# Spotlight: A-level Geography

Each term we'll spotlight an A-level course at Turton, just in case pupils are wondering where excellent learning can take them. Information about all courses is available in our prospectus here: <http://www.turtonsixthform.uk.com/>

Mrs Bali (Head of Sixth Form)



## Geography

### Why study Geography?

Geography at A Level allows you to deepen your knowledge of the world in which we live. We teach the dynamic processes of both physical and human geography which have shaped Earth. Over the two year course you will develop analytical skills, map work, numeracy and a clear understanding of how to think and write like a geographer. Students who take geography have a keen interest in current events and questioning minds which never stop wanting to know more about this fascinating planet.

### Where does it lead?

This is a well-respected academic course, valued at the top universities, as a 'facilitating' subject. Many of our students go on to geography degrees as well as other areas. Within a geography degree there are many variations and areas of study such as environmental management, geology, biogeography, city planning, population change and sustainability.

Past students are now employed in education, the Environment Agency, town planning and further research at universities.

### What does it go well with?

Geography will fit well with all subjects. However, many of our students also study History, Biology, English, Economics, Chemistry and Environmental Science.

### Requirements

Geography is a content heavy subject. You therefore need a 5 in Geography at GCSE to have the prior knowledge and understanding to access the course at A-Level.

**"Understanding the geography of health and disease helped illuminate the strengths and weaknesses of the UK response to the coronavirus pandemic." - Josh Stewart**

## The Course

## A-LEVEL

You will follow the AQA course and study:

### Year 12:

**Contemporary Urban Environments** - This unit looks at the how a greater proportion of the population are living in towns and cities.

**Changing Places** - This unit focuses on people's engagement with places, their experience of them and the qualities they ascribe to them, all of which are of fundamental importance in their lives.

**Hazards** - This unit discusses the theory of plate tectonics, and investigation of a variety of hazards including earthquakes, volcanoes, tropical storms and wild fires.

**Glacial Systems and Landscapes** - This section focuses on glaciated landscapes.

### Year 13:

**Water and Carbon Cycle** - This unit analyses systems in physical geography, as well as the concepts and their application to the water and carbon cycles.

**Global Governance and Global Systems** - Students discover the impact of globalisation on people in the world today and how the world can be governed.

**Coursework** - Each student completes an individual piece of coursework of their choice which is worth 20% of final marks. There will be a variety of fieldtrips throughout the year including a residential at the end of Year 12.



Mr Locke



lockep@turton.uk.com

"Geography blended with time equals destiny." - Joseph Brodsky